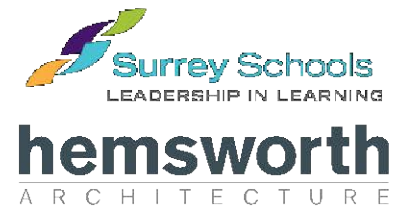


Board of Education of School District No. 36 (Surrey)



**Sketch Plan Presentation
Morgan Elementary School Addition**

October 14, 2020



Introduction - Project Team + Steering Committee

SD36 Project Manager

Wendy Crowe

Steering Committee

*Lynda Reeve - Assistant Superintendent
Gwen Myles - Principal, Morgan Elementary
Tina Saito - Vice Principal, Morgan Elementary*

Architects

Hemsworth Architecture

*John Hemsworth
Dean Shwedyk*

Structural Engineers

Bush, Bohlman & Partners

Tim White

Mechanical Engineers

Integral Group

Ivan Nikolic

Electrical Engineers

Jarvis Engineering Consultants

John Jarvis

Landscape Architects

Prospect & Refuge

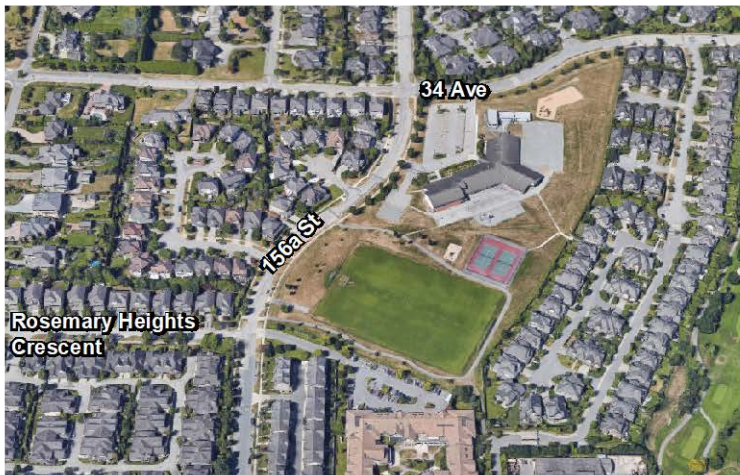
Alyssa Semczyszyn

Agenda

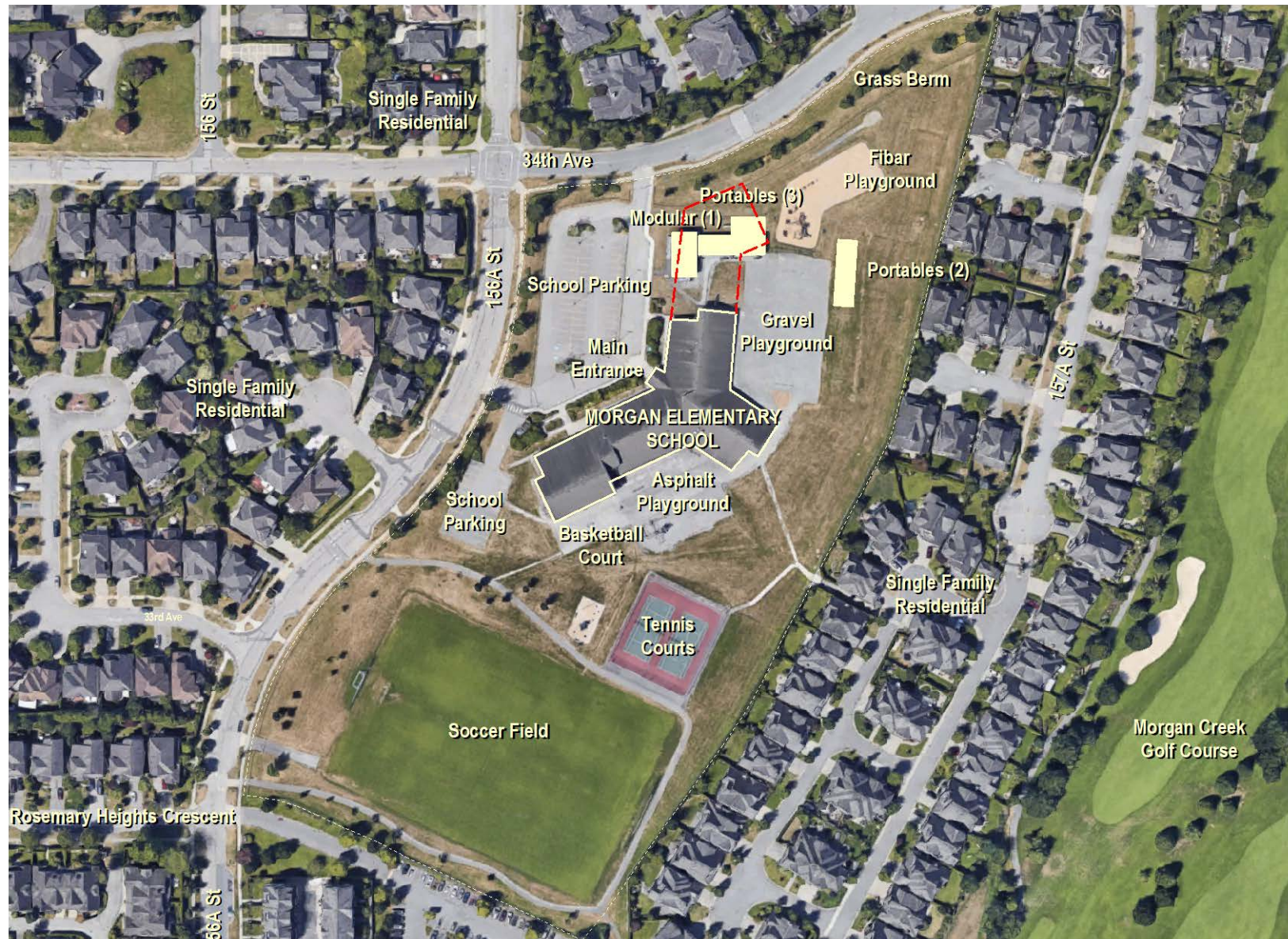
1. Site
2. Landscape Plans
3. Floor Plans
4. Design
5. Schedule



Site - Context Plan



Site - Existing Plan



Site - Proposed Plan



The site plan illustrates a proposed addition to an existing school building. The plan is oriented with North at the top. The existing school building is shown in grey, and the proposed addition is highlighted in yellow. The addition includes a central corridor (CORR.) connecting various rooms. The rooms are color-coded: yellow for Public Space / Circulation, light blue for Classrooms, orange for Kindergarten, light green for Special Education, red for General Office, and green for Washrooms and Mech/Elec + Storage. The addition features several classrooms, two kindergarten rooms, a special education room, a resource room, a storage room, and a mech/elec room. There are also two washrooms and a central corridor. The addition is located adjacent to an existing school building, which includes a playground, a grass berm, and a future addition area. The plan also shows a new sidewalk, a new parking area, and a new entry point. The addition is bounded by a new sidewalk on the north and a new parking area on the west. The addition is also adjacent to a future addition area on the east. The plan includes a legend, a north arrow, and a scale bar.

PROPOSED ADDITION
 ADDITIONAL FLOOR AREA = 1070 sm

EXIST. GROSS FLOOR AREA (BCBC) = 3174 sm
 (AREA CALCULATED TO EXTENT OF EXTERIOR WALL)

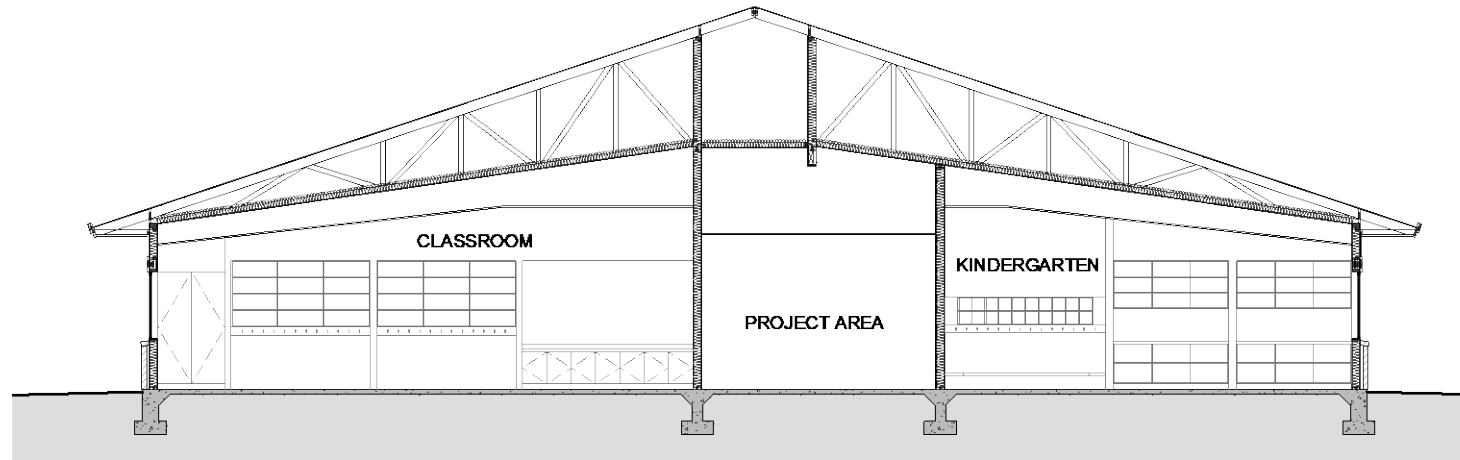
EXIST. GROSS FLOOR AREA (MoE) = 3115 sm
 (AREA CALCULATED 150mm FROM EXT FACE OF EXTERIOR WALL)

*ROOM AREAS CALCULATED FROM INT. FACE OF WALL

Legend:

- Public Space / Circulation
- Classrooms
- Kindergarten
- Special Education
- General Office
- Washrooms
- Mech/Elec + Storage

Section



Typical Classroom Storage



Kindergarten Bay Window Alcove



Typical Corridor

Exterior - Elevations



West Elevation



East Elevation

Exterior - North-West



New Addition - West Side

Schedule

Workload

