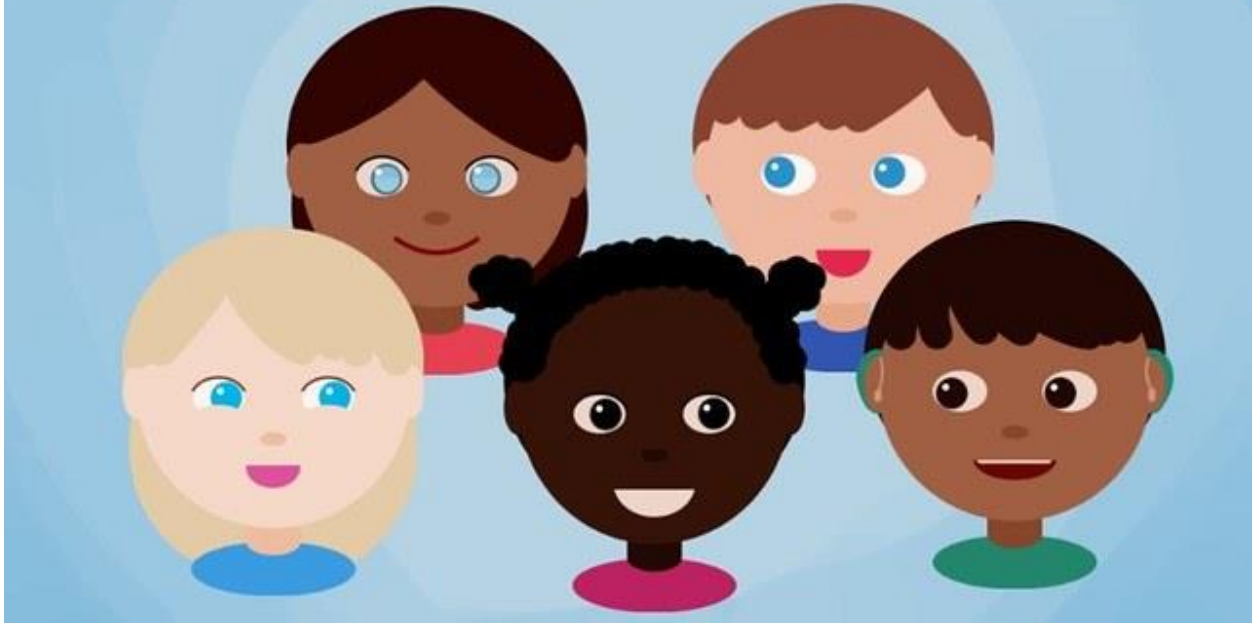


Be Yourself



Panorama Park Elementary Thursday, September 15, 2022

Dear Panorama Park Families,

To all of our Panorama Park friends, both old and new, a very warm welcome back for the 2022-23 school year. Whether you stayed close to home, traveled abroad, hiked a mountain, biked your favourite trail, and kayaked your favourite stream, our sincere wish is that you come back having invested time into your family and friends, and into your own wellness.

Again, welcome back to a new school year. It will be a busy fun filled year. We will continue to build and to further create a community where we all feel valued and safe.

We currently have 435 students enrolled in 19 divisions. Due to declining attendance, Mr. Bains has been transferred to a new school.

Today we finalized class organizations for the 2022-2023 school year. We have appreciated your patience and understanding as this process was completed. On Thursday, students will line up at the outside door to their classrooms. Teachers will meet their students there.

We are honoured to have the opportunity to work with you and your children. We are excited about the year ahead. Hych'ka to each of you and thank you for your continued support of our important work!

All the Best,

Ms. Elfstrom and Ms. Dhaliwal

Shape of the Week (September 19 to 23, 2022)



Monday, September 19, 2022

- All schools and district sites will be closed on Monday, September 19, 2022

Tuesday, September 20, 2022

- Meet the Teacher (5:00 pm to 6:00 pm)

Wednesday, September 21, 2022

Thursday, September 22, 2022

- Welcome Back Assembly for K to 7 Students @ 1:00 pm

Friday, September 23, 2022

Terry Fox Run



Our annual Terry Fox run will take place on **Friday October 7th at 1:05 PM**. We would like to run through our beautiful community, but we need **at least 20 parent volunteers** at checkpoints along the route. They will watch out for traffic and direct students. Volunteers will need to meet outside the office at 12:40 pm on October 7th to receive instructions.

If you are interested in volunteering for our run, contact Ms. Elfstrom by calling the office or through email elfstrom_t@surreyschools.ca

If we do not have enough parent volunteers, we will be completing our run on the school grounds.

This year, we will be fundraising online. Here is the link <https://terryfoxschoolrun.org>

Thank you for your support. We look forward to running together in honour of Terry Fox's Marathon of Hope.

Lunch Deliveries

Lunch drop off deadline is 11:45 am everyday. Delivery of class food bins starts at 12:00 noon sharp.

We encourage parents to have children come to school with all their supplies, snacks, and lunches for the day. Our eating time is short and is an important time for students to connect and socialize with peers.

If parents do need to drop off lunches... **please have lunches dropped off (labeled with child's name) into student division bins by 11:45 am each day.**

To keep hallways clear, and ensure students are in their own classrooms with supervision they are not permitted to come to the office hallway for lunch pick up. We have lunch monitors assigned that will come to pick up the bins. **We do not allow students to come to pick up individual lunches.** Late lunches can be dropped off and delivered to your child, through the office. We also ask that parents do not go on the playground to deliver lunches to your child.

Parents, if you would like to take your child out for lunch, please check into the office and sign your child out. When your child returns, please bring them to the office to sign in. Thanks to all parents for your support.

Communication Between Home and School

Please feel free to use the student planner as a way of communicating with your child's classroom teacher. We encourage you to check your child's planner on a regular basis. If you have any concerns, feel free to call us at the school.

In order to receive school news notifications, please download the new Surrey Schools App by using the applicable link located on the bottom left of the school website:

School Newsletters can be found on the school website under News > Newsfeed.

School website: www.surreyschools.ca/schools/panoramapark

School Code of Conduct

Welcome to Panorama Park Elementary Home of the Panthers!

Mission Statement:

At Panorama Park Elementary, we work as a team to provide a cooperative, safe environment which will enable children to develop their unique potential.

At Panorama Park, we believe in working together as a team to help create an environment where people care for one another. We want it to be a place where our students feel safe both physically and emotionally, while at the same time maintaining high academic standards. In such an environment, student learning will improve.

At Panorama Park, students are expected to:

- treat one another with dignity and respect
- respect school and classroom rules and those in positions of authority
- use appropriate language, common sense, and good judgement
- display responsible digital citizenship when communicating online
- respect school property and the property of others
- complete all assignments, including homework, to their best ability
- enter and exit the school through the **outside classroom doors**
- go outside for recess and lunch on most days (unless supervised by an adult)
- never leave school grounds without permission during the school day
- dismount their bikes, skateboards and scooters as soon as they arrive on school grounds
- report to the office if late or leaving early
- during lunch, eat quietly at their seats
- find appropriate, quiet activities to do in the classroom during inside days

In other words, three basic rules:

RESPECT Ourselves & Others

RESPECT Property

RESPECT Learning

Panorama Park's Code of Conduct:

This code of conduct applies to all Panorama Park students while at school, going to and from school, and at all school-sponsored events. Consequences will be applied in a fair and consistent manner, respecting individual rights, responsibilities, age, and maturity.

Inappropriate Behaviour Typically Has The Following Consequences:

- review of expectations followed by a warning, a timeout, a verbal or a written apology, school service, and/or a group assignment/project
- parents are informed, which may include a phone call or a meeting
- short-term suspension (in school or at home) up to 5 days
- long-term suspension (over 5 days) or referral to a district program
- consultations with police and/or fire department
- expulsion

Safe & Caring School Environments Are Free From Acts Of:

- bullying, cyber-bullying, harassment, threat, intimidation, violence in any form
- verbal, physical, or sexual abuse
- discrimination, theft, and vandalism
- retribution against a person who has reported incidents
- misusing cyberspace, cell phones, electronic devices, or computers

Safe & Caring School Environments Do Not Tolerate The Presence Of:

- intoxicating or banned substances such as alcohol, cigarettes/vapes/e-cigarettes, or drugs
- weapons or replica (toy) weapons and explosives such as fireworks
- intruders or trespassers

Notification:

As circumstances warrant, administrators have a responsibility to advise other parties following a behaviour incident:

- parent of student exhibiting **major** behaviours
- Assistant Superintendent, Safe Schools team member and/or other district staff
- ministerial agencies and/or liaison officer (police)

Dress Code for Students:

- dress appropriately for a school setting and during cold or rainy weather
- cover up appropriately and avoid exposing underwear or midriffs
- wear items that do not have inappropriate images or offensive

Panorama Park's Bell Schedule 2022 - 2023

Welcoming Bell	8:30 am
Start of School Bell	8:35 am
Morning Session	8:35 - 10:15 am
Recess	10:15 - 10:30 am
Second Session	10:30 - 11:45 am
Lunch	11:45 - 12:30 pm
Play First	11:45 - 12:10 pm
Eating Time	12:10 - 12:30 pm
Warning Bell	12:25 pm
Afternoon Starting Bell	12:30 pm
Afternoon Session	12:30 - 2:30 pm

Important Calendar Dates for 2022 – 2023

Monday, September 19	All schools and district sites closed
Monday, September 26	Non-Instructional Day
Thursday, October 10	Thanksgiving Holiday (no school)

Wednesday, September 28	Individual Photos
Friday, September 30	National Day for Truth and Reconciliation (no school)
Thursday, October 6	Early Dismissal at 1:30 pm
Thursday, October 20	Interim #1
Friday, October 21	Non-Instructional Day
Friday, November 6	Non-Instructional Day
Wednesday, November 9	Remembrance Day Assembly
Friday, November 11	Remembrance Day (no school)
Thursday, November 17	Individual Photo Retakes
Thursday, December 1	Term #1 Formal Reports
Thursday, December 8	Parent/Teacher Conferences
	Early Dismissal at 1:30 pm
Friday, December 16	Last Day of School prior to Winter Break
December 19 to January 2	Winter Break
Tuesday, January 3	Back to School
Monday, February 20	Family Day (no school)
Friday, February 24	Non-Instructional Day
Thursday, March 2	Term #2 Formal Reports
Thursday, March 9	Parent/Teacher Conferences
	Early Dismissal at 1:30 pm
Friday, March 10	Last Day of School prior to Spring Break
March 13 to March 24	Spring Break Holidays/School Closure Days
Monday, March 27	Back to School
Friday, April 7	Good Friday (no school)
Monday, April 10	Easter Monday Holiday (no school)
Friday, May 5	Non-Instructional Day
Thursday, May 4	Interim #2 or Student Led
Monday, May 22	Victoria Day (no school)
Monday, May 29	Non-Instructional Day

Thursday, June 29

Last Day of School

Term #3 Reports Go Home

Early Dismissal at 1:30 pm

Friday, June 30

Administrative Day /School Closed

Updated Guidelines for Daily Health Checks and Attending School



1 - BCCDC Guidance

If students are sick and unable to participate fully in routine activities, they should not come to school. It is important for everyone to do a daily health check before coming to school.

A health check means a person regularly checking to ensure they (or their child) are not experiencing symptoms of illness (including but not limited to COVID-19 symptoms) that would limit their ability to participate fully in regular activities before coming to school to prevent spread of communicable diseases, such as COVID-19, within school settings.

Useful Links

Click on the links below to be taken to these websites:

- [Surrey School District Website](#)
- [BC Curriculum Overview](#)
- [CASEL](#) (Collaborative for Academic, Social, and Emotional Learning)
- Social Emotional Learning Resources: [Second Step](#), [MindUP](#), [EASE](#)