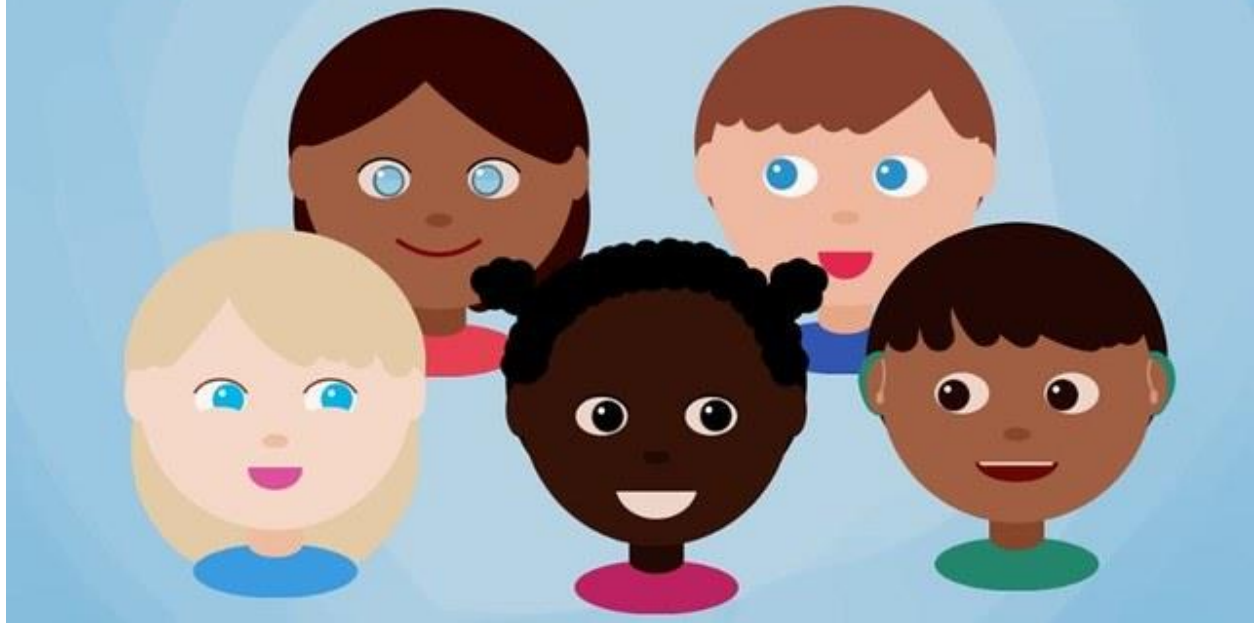


Be Yourself



Panorama Park Elementary November 14 to 18, 2022

Monday, November 14, 2022

- Girls Volleyball practice at lunch

Tuesday, November 15, 2022

- Boys Volleyball practice 7:45 am to 8:25 am
- Girls Volleyball Game

Wednesday, November 16, 2022

- Girls Volleyball practice 7:45 am to 8:25 am
- Girls Volleyball game - Away at Newton Elementary
- Intra-Murals Kick-Off

Thursday, November 17, 2022

- Individual Photo Retakes

- Boys Volleyball practice 7:45 am to 8:25 am
- Boys Volleyball game - Away at Colebrook
- Intra-Murals Kick-Off

Friday, November 18, 2022

Intra-Murals Kick-Off



Mrs. Duimel and Mrs. Taylor would like to kick off our grade two to five intra murals starting on Wednesday, November 16, and Thursday, November 17. Teachers have organized their classes into four balanced team colours: red, blue, green, and yellow. Students will be invited to play in the gym at lunch by listening to the morning announcements on the days aforementioned. We will start with Grade two students and work up to Grade five students. The rationale being that grade six and seven students have school team sports to participate in and the K's and grade 1's are too young to manage this whole process.

Mrs. Duimel has met with four older students that have volunteered to coach/referee intra-murals for the students. They have helped by generating game ideas and have discussed the general format of this endeavour with the sponsor teachers. It's wonderful to have our older students mentor our younger students.

Thank you to Mrs. Duimel and Mrs. Taylor for organizing and leading this wonderful opportunity for our students.

Remembrance Day Assembly



Thank you to our students, staff and community for a wonderful Remembrance Day assembly. We acknowledge the courage and sacrifice of those who served their country and acknowledge our responsibility to work for the peace they fought hard to achieve.

Dress for the Weather



Living in a rain forest offers many diverse weather conditions. Therefore, it makes sense that we are well prepared to be outside in the rain. It is vital for children to get outside throughout the day for fresh air and exercise. Physical activity has a positive impact on learning.

Students will be sent outside for recess times (please see below criteria) and should be dressed for the weather. Please send your children with rain jackets, umbrellas, and rain boots to ensure their comfort during our outdoor recess times and the learning time in the classroom afterward. Please send an extra set of clothes in your child's backpack.

Cold Weather & Rainy Days Inside Day

- 5 degrees or below and raining
- Raining very hard (duration and intensity is great) and so windy umbrellas will turn inside out

Cold Weather & Rainy Days Outside Day

- Above 5 degrees and raining
- Snow Days

Tips for Drivers and Tips for Students

The Surrey School District makes student safety a priority in school buildings and on school grounds, including parking lots. It is always a challenge for schools to balance the need for a convenient and intuitive traffic flow and parking pattern with the need to respect neighbours' driveways, neighbourhood traffic, city bylaws—and the most important consideration— student safety. Please read below: Tips For Drivers and Tips for Students.

School Parking and Traffic Safety



Tel 604.5967833
www.sd36.bc.ca

The Surrey School District makes student safety a priority in school buildings and on school grounds, including parking lots.

It is always a challenge for schools to balance the need for a convenient and intuitive traffic flow and parking pattern with the need to respect neighbours' driveways, neighbourhood traffic, city bylaws—and the most important consideration—student safety.

The challenge is considerable when you are trying to accommodate a sudden rush of often hundreds of cars onto a one-block, or even half-block, street frontage.

Considerable planning is put into each school's specific traffic and parking circumstances; however student safety is the most important consideration, even if it causes some inconvenience to drivers.

Therefore, it is important for the safety of your child and other students that parents and others who drop off or pick up students at school obey all posted signage and follow established traffic flow patterns.



Many schools in the district have one-way driveways, restricted turn lanes and designated pick-up and drop-off areas designed to keep everyone safe. Failing to observe the rules puts students as well as motorists at risk. With pick-up and drop-off zones in particular, it's imperative that drivers obey posted signs. It's inappropriate and dangerous to misuse these areas for even a few seconds.

Some schools also have rules aimed at reducing harm to the environment, such as requiring motorists to turn off their vehicles while parked.

Motorists who don't respect the rules can expect a visit from a staff member, volunteer or student reminding them to comply.

Tips for Drivers

- Drive only part way—or don't drive at all! Most students are usually well within walking distance of their school, so arrange a "walking school bus" with other parents. It's healthier and green!
- Think 30! A 30 km/h speed limit is in effect from 8 a.m. to 5 p.m. in school zones.
- Stop for school buses when their lights are flashing—it's the law.

- Children who are driven to school should exit the vehicle on the side closest to the curb or sidewalk.
- Use caution when a vehicle in front of you stops as the driver may be yielding to a pedestrian crossing the street.
- Always yield to pedestrians.

Tips for Students

- Walk, don't run across the street.
- Before crossing the street, wait at the curb and make sure all vehicles have stopped. Look left and right, then over your shoulder for vehicles that may be turning.
- Make eye contact with drivers before crossing at a crosswalk – it's the best way to ensure they see you.
- Don't jaywalk. Drivers don't expect to see pedestrians away from intersections and crosswalks, so pedestrians are even less likely to be seen.
- Don't wear headphones, talk on the phone, text or use handheld devices when crossing a street.

District Info Sheet – English Cr.July/11 8040-03 (RCSS)

Allergy-Aware Schools

Anaphylaxis is a severe, life-threatening allergic reaction. Reactions are often rapid, and may occur within seconds of exposure to even the smallest amounts of the allergen. Immediate medical treatment is required when a reaction occurs. **Examples of life-threatening allergens are:**

- **peanuts**
- **tree nuts and nut products**
- **shellfish**
- **cow's milk**
- **eggs**
- **insect venom**

The Surrey School District strives to keep schools safe for all students and staff. Where there is a student with a life-threatening allergy, school staff, students and parents work together to make the school 'allergy-aware' and prepare a plan to reduce the risk of student exposure to the allergen.

Factors such as the age of a student, organization and layout of the school, and properties of the allergen are considered in deciding upon the most appropriate action. Ideally, this is achieved without depriving allergic students of normal interactions or placing unreasonable restrictions on the activities of other students and staff in the school. Information about the plan is provided to all staff, students and parents as necessary.

In order to reduce the risk for allergic students, all students and staff are asked to wash their hands before and after eating. Schools may also ask parents to avoid sending specific food/beverage products to school in their child's lunch or snack if there is an anaphylactic student in their child's classroom. Alternative ideas for lunches and snacks can be obtained from public health facilities.

The success of an 'allergy-aware' school and the safety of our students are dependent upon the support and assistance of all staff, students and parents to limit the risk of exposure. Cooperation and understanding of life-threatening allergies is greatly appreciated.

Communicating Student Learning



For reporting, our teachers have the option of using a student progress template (paper report) or a digital portfolio. Freshgrade is no longer available and has been replaced by Spaces. If your child's teacher is using Spaces, you will be receiving an invite to join the digital portfolio.

Regardless of the format, both will provide a summary of your child's progress in relation to learning standards of the B.C. Curriculum (what your child knows and can do). The student report and digital portfolios will represent one aspect of the ongoing, timely, and responsive process of communicating student learning with parents. Teachers, students and parents are encouraged to meet together regularly to discuss successes in learning, areas requiring further development, and next steps.

It's Important To Continue To Take Steps To Reduce The Spread Of Communicable Diseases

Ensure you and your family are taking steps to stay healthy and reduce the spread of communicable diseases, including COVID-19.

Measures for protecting students, staff and families include staying up to date with [vaccines](#), practicing health awareness, and staying home when sick – including if you have a fever, cough, rash, diarrhea or vomiting.

For more information, check the [Provincial COVID-19 Communicable Disease Guidelines for K-12 Settings](#) or the province's [COVID-19 safe schools](#) website.

Important Calendar Dates for 2022 – 2023

Thursday, November 10	Non-Instructional Day
Friday, November 11	Remembrance Day (no school)
Thursday, November 17	Individual Photo Retakes
Tuesday, November 29	Winter Concert Rehearsal (K to 4 and our 4/5 class)
Wednesday, November 30	Winter Concert Performance (K to 4 and our 4/5 class)
Thursday, December 1	Winter Concert Performance (K to 4 and our 4/5 class)
Thursday, December 1	Term #1 Formal Reports
Thursday, December 8	Parent/Teacher Conferences
	Early Dismissal at 1:30 pm
Friday, December 16	Last Day of School prior to Winter Break
December 19 to January 2	Winter Break
Tuesday, January 3	Back to School
Monday, February 20	Family Day (no school)
Friday, February 24	Non-Instructional Day
Thursday, March 2	Term #2 Formal Reports
Thursday, March 9	Parent/Teacher Conferences
	Early Dismissal at 1:30 pm
Friday, March 10	Last Day of School prior to Spring Break
March 13 to March 24	Spring Break Holidays/School Closure Days
Monday, March 27	Back to School
Friday, April 7	Good Friday (no school)
Monday, April 10	Easter Monday Holiday (no school)

Friday, May 5	Non-Instructional Day
Thursday, May 4	Interim #2 or Student Led
Monday, May 22	Victoria Day (no school)
Monday, May 29	Non-Instructional Day
Thursday, June 29	Last Day of School
	Term #3 Reports Go Home
	Early Dismissal at 1:30 pm
Friday, June 30	Administrative Day /School Closed

Useful Links

Click on the links below to be taken to these websites:

- [Surrey School District Website](#)
- [BC Curriculum Overview](#)
- [CASEL](#) (Collaborative for Academic, Social, and Emotional Learning)
- Social Emotional Learning Resources: [Second Step](#), [MindUP](#), [EASE](#)