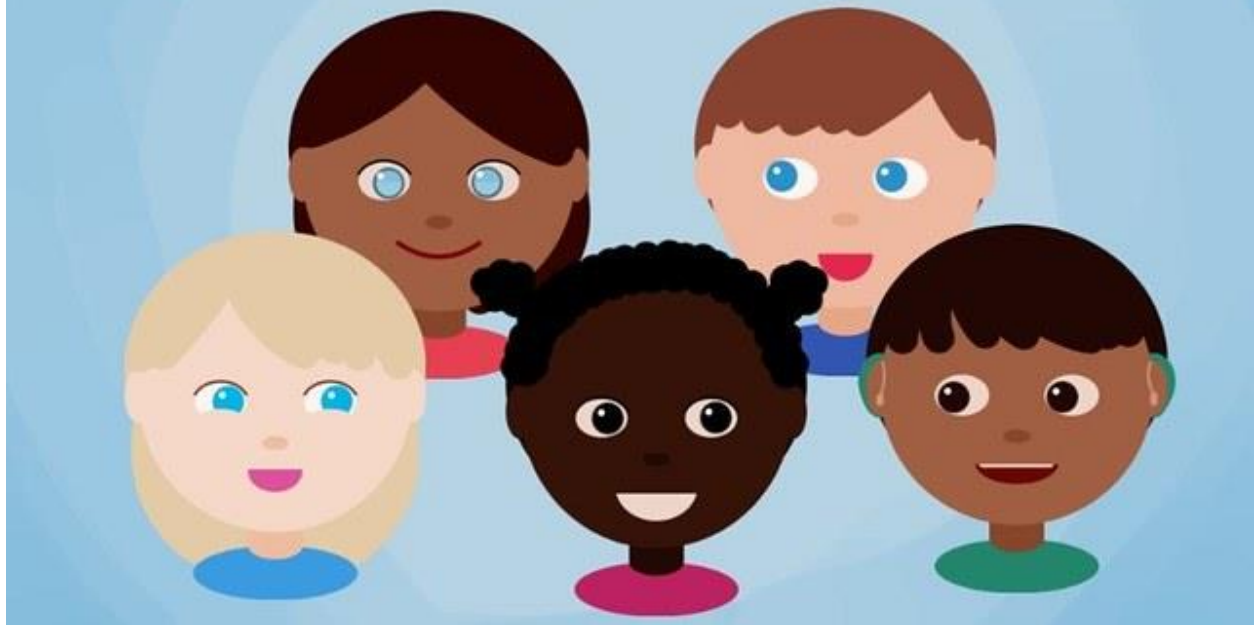


# Be Yourself



Panorama Park Elementary School April 11 to April 15, 2022

## What's Happening This Week



## This Week's Calendar

### Monday, April 11

- Grade 6 Badminton Practice 7:35 am to 8:30 am
- Grade 6 Badminton Practice at lunch

### Tuesday, April 12

- Grade 6 Badminton Practice 7:35 am to 8:30 am

### Wednesday, April 13

- Badminton Game - Grade 6 Vs Grade 7
- Grade 7 Badminton Practice at lunch

### Thursday, April 14

- Grade 7 Badminton Practice 7:35 am to 8:30 am
- Grade 7 Badminton Practice
- Spirit Day - Earth Day (Wear Green (for the plants), Blue (for the water) and Brown (for the earth))

### Friday, April 15

- Good Friday - No School

### Monday, April 18

- Easter Monday - No School

Retirement



Lynda Randle has thoroughly enjoyed her years with the District and the many challenges, experiences and day-to-day adventures that come with being in an elementary school office. Lynda has many memories that will stay with her forever. Lynda has been with our District for 24 school years. Her last day is Friday, April 29, 2022.

## Assemblies



Tuesday April 26th First In Person Assembly (Gr. K-3 and Gr. 4-7 separate assemblies)

At this time, this is for our students and staff.

## Class Organization for September 2022/23

Placements for classrooms are organized and finalized in the first week of school. We want to ensure we have accurate student enrolment numbers, and that staff have had an opportunity to meet and work with all the children in their grade group before these decisions are made.

Parents will see that in the first week of school, all classes Kindergarten to grade 7 will rotate through grade group teachers to adjust groups, re-evaluate group compositions, allow different friendship pairings, etc. Please remind your child they do not have an assigned teacher the first week of school. We appreciate your support as we work to create classrooms that are balanced.

Please note: Each day children will gather at the same meeting spot with their grade group to begin the day. At the end of the day, all students will be dismissed from the same place.

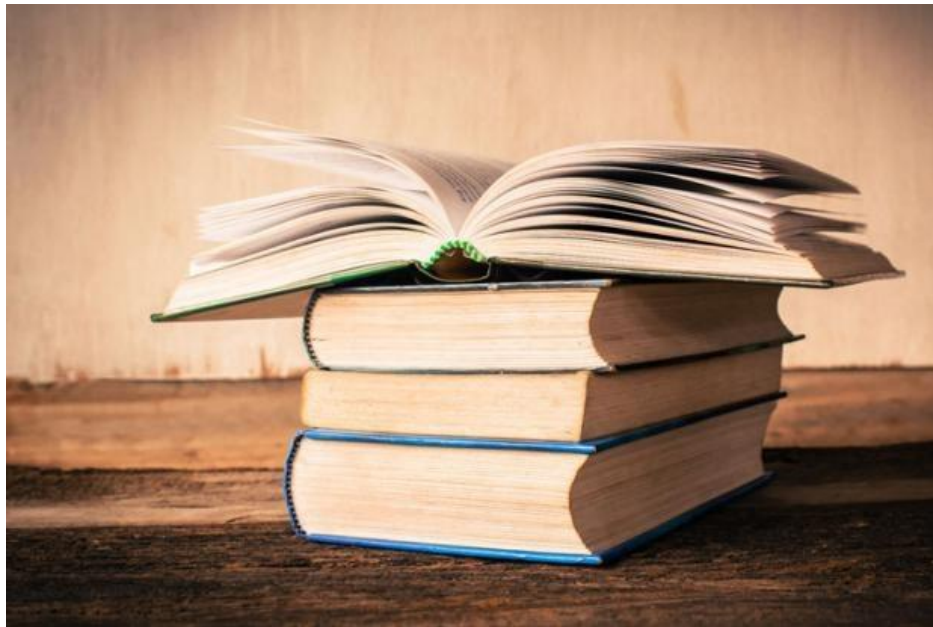
Once classes have been finalized by our staff, your child will come home with a slip of paper, confirming placement and providing your child's division number and teacher name.

Placement of students is determined by the following criteria: student intellectual, social and emotional development, learning styles and strengths of students, degree of independence in student work habits, integration of students with special needs, separating students who do not work well together, and maintaining appropriate teacher student ratios.

As much as is possible, attempts are made to have balanced class sizes. The composition of students in a particular class as determined by these criteria may provide compelling reasons for having one class smaller and another larger. Some small groups are deliberately kept together if they form a unique group for instructional purposes, as in the case of ELL students. We try to ensure that there are positive leaders included in each class. We take pride in the diversity of students enrolled in our public schools. Therefore, children who exhibit learning disabilities, as well as others with vision or hearing disadvantages are included and considered in the organizational plan. While participating in regular classrooms, these children receive additional support and assistance in their learning programs. These students may also receive assistance from trained education assistants.

The placement of students must be determined through school based professional evaluations. Teachers have knowledge of the overall academic needs of children and therefore can best determine where individual children should be placed. We recognize that parents are often able to provide the school with important information that can assist in the placement of students. Parents do have the opportunity to advise the school of personal, educational or social information, which could affect a child's placement for next year. However, a request for a specific teacher or class is not appropriate. There is a parent form that allows parents to share insights. **This parent form is due to Ms. Dhaliwal by Friday, May 20, 2022. Please contact the office for this form.**

## Panorama Park Nightly Reading Draw Winners



**Month - February 2022**

### **Primary Winners**

1. Ian M Div 10
2. Simryn J Div 18

3. Maaeha M. Div 13
4. Sejan J Div 17
5. Chanse B Div 13

#### **Intermediate Winners**

1. Hartej M Div 8
2. Dilnoor N Div 1
3. Sabaig S Div 5
4. Hartej M. Div 8
5. Amber A Div 8

#### **Month - March 2022**

#### **Primary Winners**

1. Gursimran S Div 17
2. Hargun K Div 16
3. Ryan D Div 20
4. Gurshan S Div 20
5. Angad K Div 20

#### **Intermediate Winners**

1. Jaiveer S Div 9
2. Amrit K Div 9
3. Ali P Div 7
4. Kirit D Div 8
5. Hartej M Div 8

## **Important Dates**

### **Important Dates:**

Thursday April 14th Spirit Day to celebrate Earth Day

Friday April 15th Good Friday – No School

Monday April 18th     Easter Monday – No School

Friday April 22nd     Earth Day

Tuesday April 26th     First In Person Assembly (gr. K-3 and gr. 4-7 separate assemblies)

## Useful Links

**Click on the links below to be taken to these websites:**

- [Surrey School District Website](#)
- [BC Curriculum Overview](#)
- [CASEL](#) (Collaborative for Academic, Social, and Emotional Learning)
- Social Emotional Learning Resources: [Second Step](#), [MindUP](#), [EASE](#)